

MCC Facilities Assessment

Overbrook Theater / Fruenthal Foundation Art Center

8/13/2010

Building Rating System

	Possible	Earned	Percent
Site:			
1.0 Total Points	200	159	80%
Building:			
2.1 Building Exterior Elements	100	64	64%
2.2 Accessibility	100	66	66%
2.3 Structural	100	77	77%
2.4 Building Envelope	100	45	45%
2.5 Interior / Finishes	135	102	76%
2.6 Life Safety	100	73	73%
2.7 Food Service	0	0	#DIV/0!
2.8 Mechanical	165	116	70%
2.9 Electrical	130	59	45%
Totals:	1130	761	67%

MCC Facilities Assessment

8/13/2010

Building Data Record

Building Name: Overbrook Theater / Fruenthal Foundation Art Center

Street Address: _____

Building Data: Original Construction: 1969

Additions/Renovations: N/A

Number of Floors: 3 Building Capacity: _____

Building Area: 39,000 SF Site Area: _____

Types of Construction: Bearing Masonry Steel Frame Concrete Frame
 Wood Other

Exterior Surfacing: Brick Metal Stucco
 Wood Other

Floor Construction: Structural Slab Steel Joists Slab on Grade
 Wood Joists Other

Air Conditioning: Roof Top Window Units Central
 Room Units

Heating: Roof Top Forced Air Central
 Room Units Steam Hot Water

Electrical Service: Aerial Underground Primary
 Secondary 7200/12470V

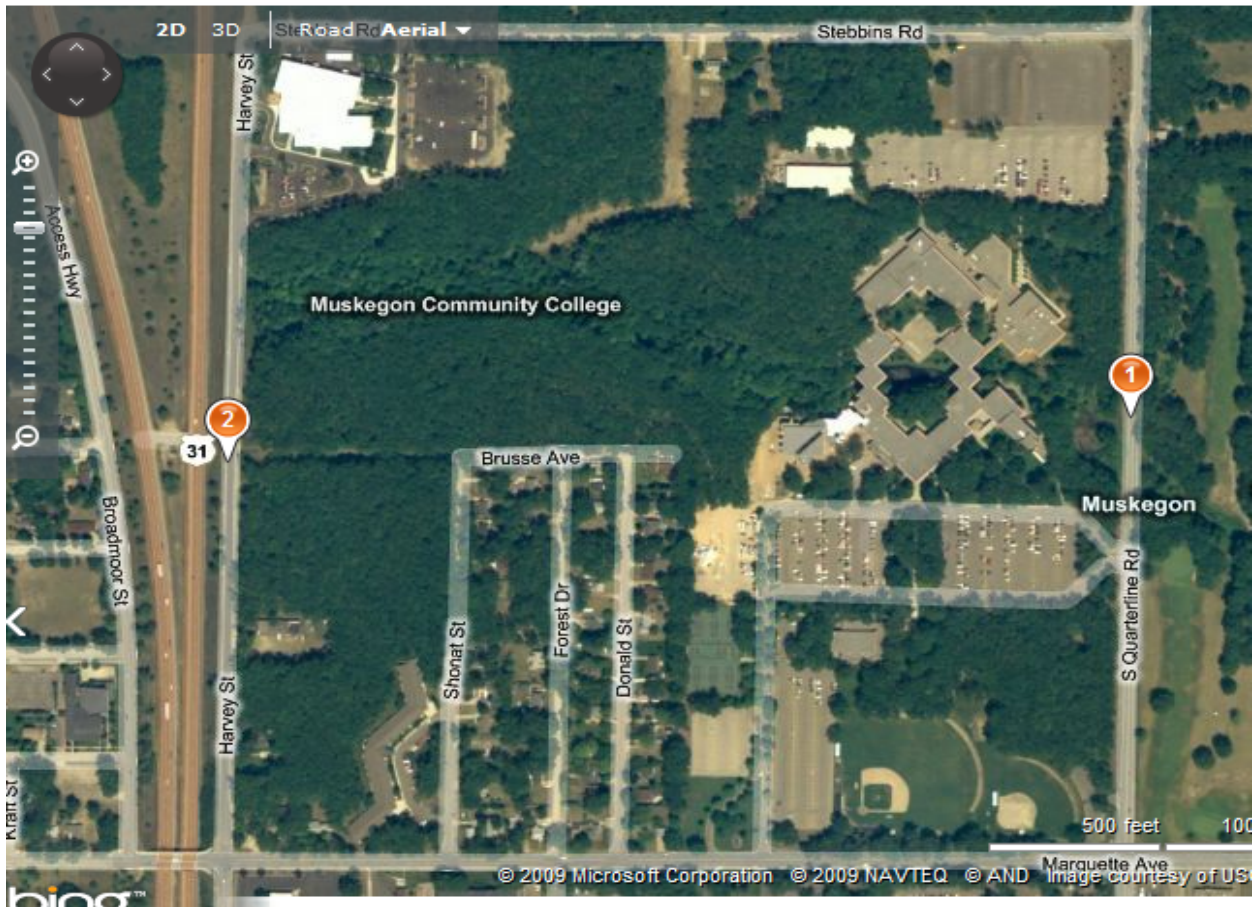
480/277V Voltage: **3** Phase: **4** Wire:

Generator: Exists Natural Gas Diesel
 None

MCC Facilities Assessment

Aerial Photography

0



MCC Facilities Assessment

Overbrook Theatre / Fruenthal Foundation

8/13/2010

1.0 Building Site

200 Points

	Possible	Earned
1.1 Site is large enough to meet present needs and future needs.	25	20
1.2 Separation of bus, car and pedestrian traffic is adequate for the safety of occupants.	25	25
1.3 Site has stable, well drained soil with no signs of erosion. Storm water management is effective.	25	15
1.4 Pedestrian services include adequate sidewalks with crosswalks, curb cuts, etc.	20	16
1.5 Condition of Pedestrian services include sidewalks, curb cuts, etc.	15	15
1.6 Sufficient on-site parking is provided for all occupants	20	20
1.7 Condition of on-site parking	15	14
1.8 Vehicular entrances and exits permit safe traffic flow.	20	16
1.9 Outdoor facilities are adequate and accessible	15	9
1.10 Condition of Outdoor facilities	20	9
TOTAL - Building Site	200	159

Notes:

Maximum Points	Non-Existent 0%	Very Inadequate 1-29%	Poor 30-49%	Borderline 50-69%	Satisfactory 70-89%	Excellent 90-100%
5	0	1	2	3	4	5
10	0	2	4	6	8	10
15	0	3	6	9	12	15
20	0	4	8	12	16	20
25	0	5	10	15	20	25

MCC Facilities Assessment

Overbrook Theater / Fruenthal Foundation Art Center

8/13/2010

2.1 Building Exterior Elements

100 Points

	Possible	Earned
2.1.1 Exterior building / site signage is adequate.	15	9
2.1.2 Landscaping is adequate and appropriate.	20	16
2.1.3 Site and entry are well defined.	20	12
2.1.4 Entrances are sheltered from inclement weather.	20	12
2.1.5 Overall curb appeal (Building and Site)	25	15
TOTAL - Building Exterior Elements	100	64

Notes:

Maximum Points	Non-Existent 0%	Very Inadequate 1-29%	Poor 30-49%	Borderline 50-69%	Satisfactory 70-89%	Excellent 90-100%
5	0	1	2	3	4	5
10	0	2	4	6	8	10
15	0	3	6	9	12	15
20	0	4	8	12	16	20
25	0	5	10	15	20	25

MCC Facilities Assessment

Overbrook Theater / Fruenthal Foundation Art Center

8/13/2010

2.2 Accessibility

100 Points

	Possible	Earned
2.2.1 Exterior Walks and drives contain barrier-free curb cuts for building accessibility.	10	10
2.2.2 Barrier-Free parking is provided.	10	6
2.2.3 Outdoor areas and structures are on accessible routes.	20	10
2.2.4 Building entrances and exits are barrier-free.	20	20
2.2.5 Toilet rooms are on accessible routes and designed to meet barrier-free codes.	20	10
2.2.6 Occupied spaces are accessible and are on accessible routes.	20	10
TOTAL - Accessibility	100	66

Notes:

Maximum Points	Non-Existent 0%	Very Inadequate 1-29%	Poor 30-49%	Borderline 50-69%	Satisfactory 70-89%	Excellent 90-100%
5	0	1	2	3	4	5
10	0	2	4	6	8	10
15	0	3	6	9	12	15
20	0	4	8	12	16	20
25	0	5	10	15	20	25

MCC Facilities Assessment

Overbrook Theater / Fruenthal Foundation Art Center

8/13/2010

2.3 Structural

100 Points

	Possible	Earned
2.3.1 Condition of the roof.	25	8
2.3.2 Condition of the (visible) foundations.	25	25
2.3.3 Condition of exterior and interior walls.	25	19
2.3.4 Structure is non-combustible.	25	25
TOTAL - Structural	100	77

Notes:

Maximum Points	Non-Existent 0%	Very Inadequate 1-29%	Poor 30-49%	Borderline 50-69%	Satisfactory 70-89%	Excellent 90-100%
5	0	1	2	3	4	5
10	0	2	4	6	8	10
15	0	3	6	9	12	15
20	0	4	8	12	16	20
25	0	5	10	15	20	25

MCC Facilities Assessment

Overbrook Theater / Fruenthal Foundation Art Center

8/13/2010

2.4 Building Envelope

100 Points

	Possible	Earned
2.4.1 Wall insulation is adequate.	15	3
2.4.2 Roof insulation is adequate.	15	3
2.4.3 Condition of exterior wall finishes, masonry, siding, etc.	15	12
2.4.4 Condition of exterior windows.	15	6
2.4.5 Condition of exterior doors and frames.	10	6
2.4.6 Exterior glass is insulated.	15	3
2.4.7 Openings / penetrations are sealed.	5	4
2.4.8 Building has proper amounts of daylighting.	10	8
TOTAL - Building Envelope	100	45

Notes:

Maximum Points	Non-Existent 0%	Very Inadequate 1-29%	Poor 30-49%	Borderline 50-69%	Satisfactory 70-89%	Excellent 90-100%
5	0	1	2	3	4	5
10	0	2	4	6	8	10
15	0	3	6	9	12	15
20	0	4	8	12	16	20
25	0	5	10	15	20	25

MCC Facilities Assessment

Overbrook Theater / Fruenthal Foundation Art Center

8/13/2010

2.5 Interior / Finishes

150 Points

	Possible	Earned
2.5.1 Condition of toilet rooms.	20	16
2.5.2 Condition of flooring.	20	16
2.5.3 Condition of ceilings.	20	16
2.5.4 Condition of walls.	15	12
2.5.5 Condition of equipment.	15	12
2.5.6 Condition of doors and hardware.	15	9
2.5.7 Condition of casework.	15	9
2.5.8 Condition of visual display boards.	15	12
2.5.9 Condition of lockers.	0	
TOTAL - Interior / Finishes	135	102

Notes:

Maximum Points	Non-Existent 0%	Very Inadequate 1-29%	Poor 30-49%	Borderline 50-69%	Satisfactory 70-89%	Excellent 90-100%
5	0	1	2	3	4	5
10	0	2	4	6	8	10
15	0	3	6	9	12	15
20	0	4	8	12	16	20
25	0	5	10	15	20	25

MCC Facilities Assessment

Overbrook Theater / Fruenthal Foundation Art Center

8/13/2010

2.6 Life Safety and Security

100 Points

	Possible	Earned
2.6.1 Fire alarm system is up-to-date and adequate for building served.	15	12
2.6.2 Fire sprinkler system installed throughout building. (Stage only)	15	12
2.6.3 Security system is installed throughout building.	10	5
2.6.4 Card access control system is installed.	10	5
2.6.5 Security camera system is installed.	15	7
2.6.6 There are at least two independent exits from any point in the building.	10	10
2.6.7 Egress stairways are adequate.	10	8
2.6.8 Exterior doors open outward and are equipped with panic hardware.	5	5
2.6.9 Classroom doors are adequate for egress requirements.	5	4
2.6.10 Corridors lead to an exit or exit stair.	5	5
TOTAL - Life Safety and Security	100	73

Notes:

Maximum Points	Non-Existent 0%	Very Inadequate 1-29%	Poor 30-49%	Borderline 50-69%	Satisfactory 70-89%	Excellent 90-100%
5	0	1	2	3	4	5
10	0	2	4	6	8	10
15	0	3	6	9	12	15
20	0	4	8	12	16	20
25	0	5	10	15	20	25

MCC Facilities Assessment

Overbrook Theater / Fruenthal Foundation Art Center

8/13/2010

2.7 Food Service

0 Points

	Possible	Earned
2.7.1 Condition of flooring.	0	0
2.7.2 Condition of ceilings.	0	0
2.7.3 Condition of walls.	0	0
2.7.4 Condition of lighting.	0	0
2.7.5 Condition of kitchen equipment.	0	0
2.7.6 Dry storage requirements vs. code	0	0
2.7.7 Refrigerated storage requirements vs. code	0	0
2.7.8 Condition of serving equipment.	0	0
2.7.9 Overall flow of food service.	0	0
TOTAL - Food Service	0	0

Notes:

Maximum Points	Non-Existent 0%	Very Inadequate 1-29%	Poor 30-49%	Borderline 50-69%	Satisfactory 70-89%	Excellent 90-100%
5	0	1	2	3	4	5
10	0	2	4	6	8	10
15	0	3	6	9	12	15
20	0	4	8	12	16	20
25	0	5	10	15	20	25

MCC Facilities Assessment

Overbrook Theater / Fruenthal Foundation Art Center

8/13/2010

2.8 Mechanical

200 Points

	Possible	Earned
2.8.1a Heat source type is appropriate for the application.	5	4
2.8.1b Condition of the heating source.	0	0
2.8.2a Cooling source type is appropriate for the application.	5	4
2.8.2b Cooling exists in appropriate spaces.	5	4
2.8.2c Condition of cooling source.	10	8
2.8.3 Condition of the heating and cooling distribution system.	20	16
2.8.4 Condition of the terminal devices.	0	0
2.8.5 Condition of the air handling equipment.	20	12
2.8.6 Condition of controls.	20	16
2.8.7 Ventilation effectiveness.	10	8
2.8.8 Condition of the sanitary system.	10	8
2.8.9 Condition of the storm system.	10	8
2.8.10 Plumbing fixtures are adequate for building occupancy	10	8
2.8.11 Condition of exterior water supply.	10	8
2.8.12 Condition of the internal water distribution system.	10	4
2.8.13 Speciality classrooms (labs, shops, etc.) are equipped with the appropriate plumbing fixtures.	10	0
2.8.14 Condition of drinking fountains.	10	8
TOTAL - Mechanical	165	116

Notes:

See next page.

Maximum Points	Non-Existent 0%	Very Inadequate 1-29%	Poor 30-49%	Borderline 50-69%	Satisfactory 70-89%	Excellent 90-100%
5	0	1	2	3	4	5
10	0	2	4	6	8	10
15	0	3	6	9	12	15
20	0	4	8	12	16	20
25	0	5	10	15	20	25

MCC Facilities Assessment

2.8 Mechanical Cont.

Notes:

- 1 The air handling units are original and should be replaced
- 2 There are problems with the domestic hot water recirculation resulting in long delays before hw reaches the fixture.
- 3 There are hydronic flow and balance issues
- 4 Heating hot water is provided from the boilers in the Technology Building
- 5 Chilled water is provided by a Trane chiller (RTHC 1C1F - 2001) with a Evapco cooling tower (AT 19-79 - 2001)

MCC Facilities Assessment

Overbrook Theater / Fruenthal Foundation Art Center

8/13/2010

2.9 Electrical

150 Points

	Possible	Earned
2.9.1 Condition of the electrical service.	25	15
2.9.2 Interior building and exterior building lights.	25	15
2.9.3 Condition / capacity of distribution and branch panels.	20	12
2.9.4 Condition site lighting.	15	0
2.9.5 Emergency lighting is provided and meets current egress requirements.	15	9
2.9.6 Condition of receptacles and circuiting.	10	8
2.9.7 Lighting controls are provided to meet energy code.	10	0
2.9.8 Condition of public address system.	0	0
2.9.9 Condition of clock system.	0	0
2.9.10 Emergency power is provided by a generator.	10	0
TOTAL - Electrical	130	59

Notes:

1. The transformer that feeds the theater lights is very noisy.
2. The stage lighting control panel was installed in 1993.

Maximum Points	Non-Existent 0%	Very Inadequate 1-29%	Poor 30-49%	Borderline 50-69%	Satisfactory 70-89%	Excellent 90-100%
5	0	1	2	3	4	5
10	0	2	4	6	8	10
15	0	3	6	9	12	15
20	0	4	8	12	16	20
25	0	5	10	15	20	25

